

Dual-Use Mount for MB50 and RAMP-25



(Amplifiers Not Included)

For information, contact:
sales@tserecon.com

Features

- For use with MB50 and RAMP-25 amplifiers
- Consists of mount and adapter plate
- Adapter plate has mounting holes for both amplifiers
- Protects equipment from shock & vibration
- Allows full access to all connectors, latches and indicators
- Allows for easy 'jerk-and-run'
- Ideal for ground vehicles, boats, aircraft and static locations
- No tools required to install or remove radio.
- Integrated ground and bonding points
- Three-year limited warranty
- Locking cable available as a no-cost option



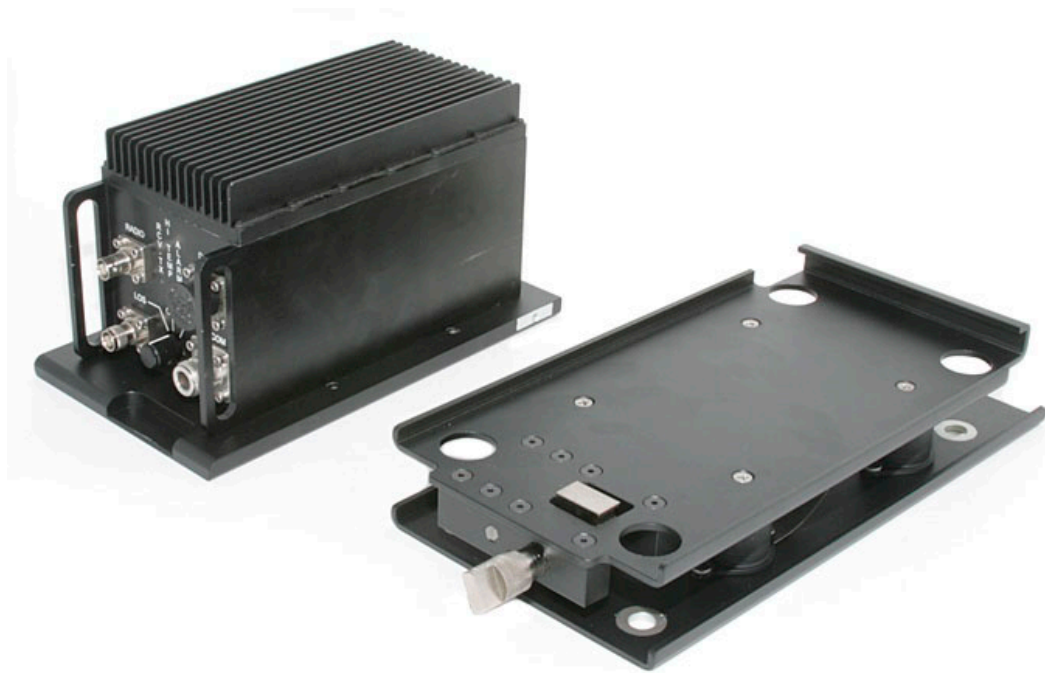
Tactical Support Equipment Inc.
4039 Barefoot Road
Fayetteville, NC 28306
www.tserecon.com

Phone: 1.800.889.4030
Phone: 910.425.3360
Secure: 910.426.3369
Fax: 910.425.3361

Specifications

Part number:	TSE-RM-5
Material:	Aluminum
Finish:	Powder Coated
Latching:	Fine-Thread, Quick-Release Thumbscrew
Hardware:	Stainless Steel
Mounting:	3/8" Holes with Bonding Surfaces
Size:	12"L x 5.5"W x 2.1"H
Weight:	3.8 Lbs.
Operating Temp:	-55° C to +150° C (-67° F to +300° F)
Storage Temp:	-55° C to +150° C (-67° F to +300° F)

- Detailed specifications available on request.



For more information, contact:

sales@tserecon.com

Tel: 910.425.3360